

Clear Creek Center

13,687 SF of New 3-Story Retail/Office Building

1518 Monroe Dr NE Atlanta, GA 30324

Adjacent to Piedmont Park and the Beltline, walking distance to Ansley Park and Morningside neighborhoods.



Elevation of 1518 Monroe Drive with parking underneath.



Elevation of 1518 Monroe Drive
New building facing Monroe Drive
13, 687 sf w/ parking under the building.

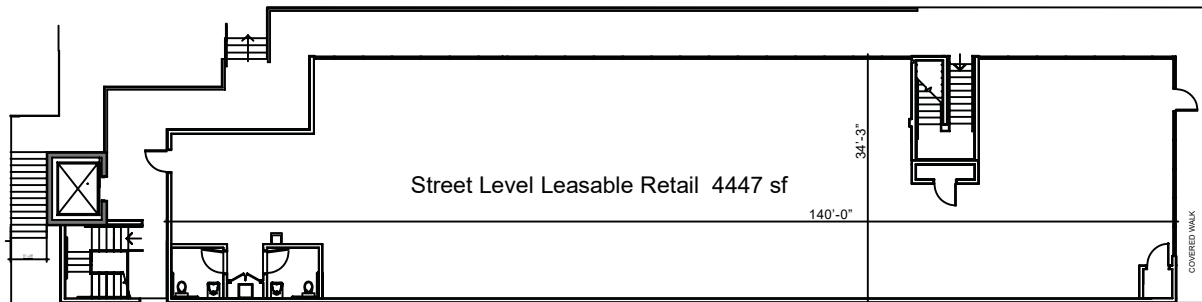
Property is adjacent to Piedmont Park with pedestrian / bike access to and from the Park and the Beltline.

MEWS
DEVELOPMENT

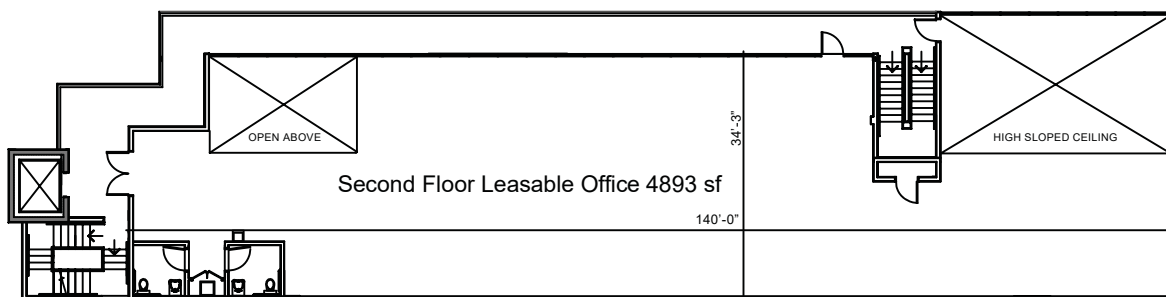
For More Information -
Contact: Mews Development Co.
Deshion Crawford or Tom Puett
404.355.1505
deshion@mewsdevelopment.com
tom@mewsdevelopment.com

Clear Creek Center

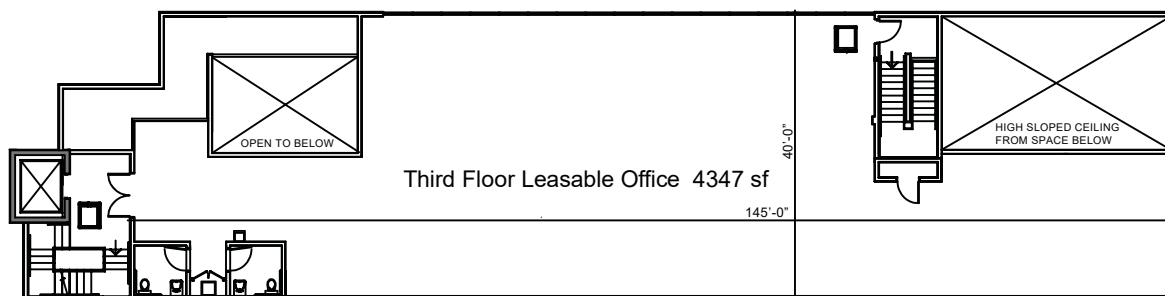
FLOOR PLANS OF 1518 MONROE



North ↑ Street Level Floor Plan
1518 Monroe Drive NE



North ↑ Second Level Floor Plan



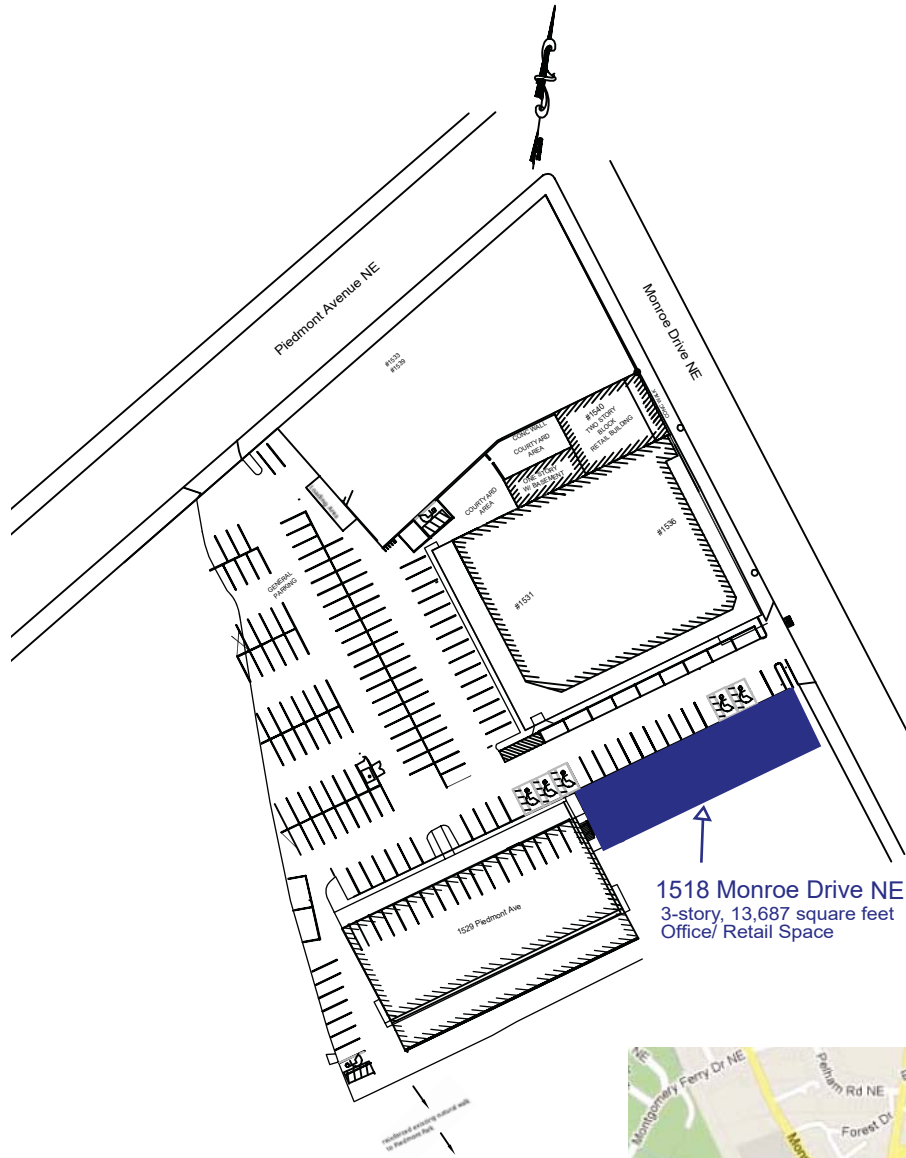
North ↑ Third Level Loft Floor Plan

MEWS
DEVELOPMENT

For More Information -
Contact: Mews Development Co.
Deshion Crawford or Tom Puett
404.355.1505
deshion@mewsdevelopment.com
tom@mewsdevelopment.com

Clear Creek Center

SITE PLAN OF EXPANSION



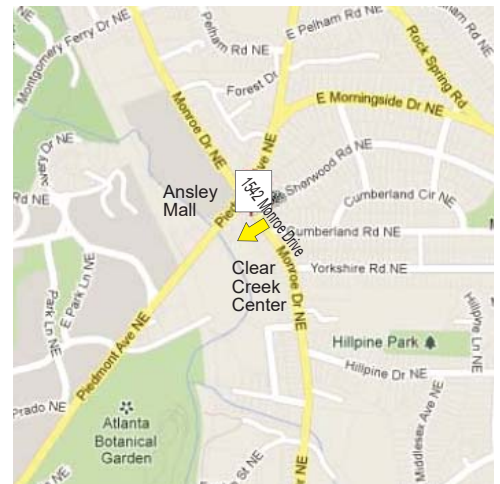
1518 Monroe Drive NE
3-story, 13,687 square feet
Office/ Retail Space

Traffic Count vehicles per day

Monroe Drive 18,076
Piedmont Avenue 25,966

3 Miles Demographics

2019 Projection	178,990
2014 Estimate	162,344
Projected Growth 2014-2019	10.25%
2014 Est. Average Household Income	\$90,044
1 mile 2014 Est. Avg Household Income	\$126,754



MEWS DEVELOPMENT

For More Information -
Contact: Mews Development Co.
Deshion Crawford or Tom Puett
404.355.1505
deshion@mewsdevelopment.com
tom@mewsdevelopment.com