

2,307 Square Feet of 100% Air conditioned



2135 Defoor Hills Road, Suite L

Features

Chattahoochee Industrial/Westside Design District

100% air conditioned space

100 amp 3 phase electrical service

Common dock high loading.

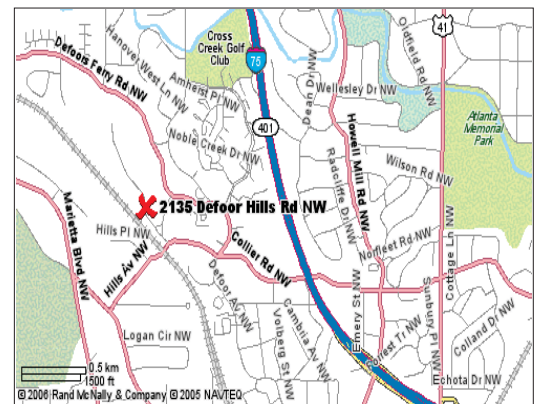
15' Clear Ceiling Height

Parking: 1.83 per 1,000 sf

Common Expenses \$1.88 apsf

Rental Rate: \$12.00 apsf nnn

3% annual increases



For More Information - Contact: Tom Puett or Deshion Crawford

MEWS
DEVELOPMENT

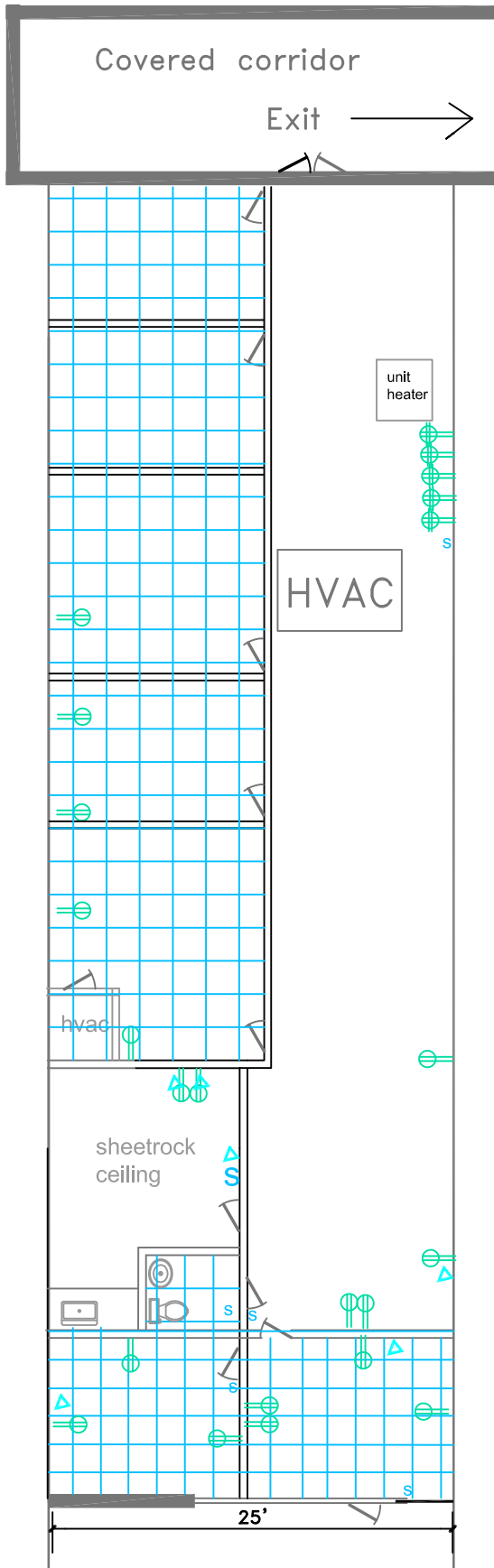
2135 Defoor Hills Road, Ste. K2 Atlanta, GA 30318

tom@mewsdevelopment.com deshion@mewsdevelopment.com www.mewsdevelopment.com

404.355.1505

Gillespi Business Center

2135 Defoor Hills Road & 2144/48 Hills Ave.
Atlanta, GA 30318



2135 Defoor Hills Road, Suite L
 Atlanta, GA 30318
 2,307 sf
 100% Air Condioined Space



For more informaton contact: Deshion Crawford or Anne Puett
 404-355-1505
 deshion@mewsdevelopment.com or
 anne@mewsdevelopment.com
 www.mewsdevelopment.com