

3,005 sf of Office/Warehouse Space with 2,329 sf of Office Space



2144-D2 Hills Avenue, Atlanta, GA 30318

Features

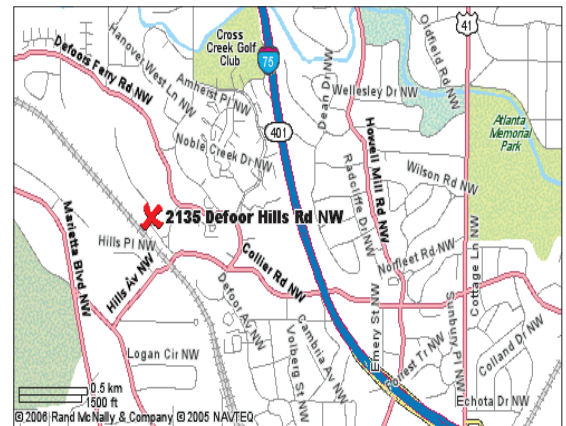
Chattahoochee Industrial/Westside
Design District
100% HVAC
100 amp, 3-phase power
14'4" Ceiling Height
Fully Sprinklered
Covered common dock high and rear drive-in loading
Broadband Internet Available

Common Expenses: \$2.04 apsf
Base Year Rental Rate: \$12.00 apsf nnn
Annual 3% escalations



MEWS DEVELOPMENT

404 355 1505 | fax 404 355 3705 | www.mewsdevelopment.com
2135 Defoor Hills Road, Suite K2, Atlanta, GA 30318



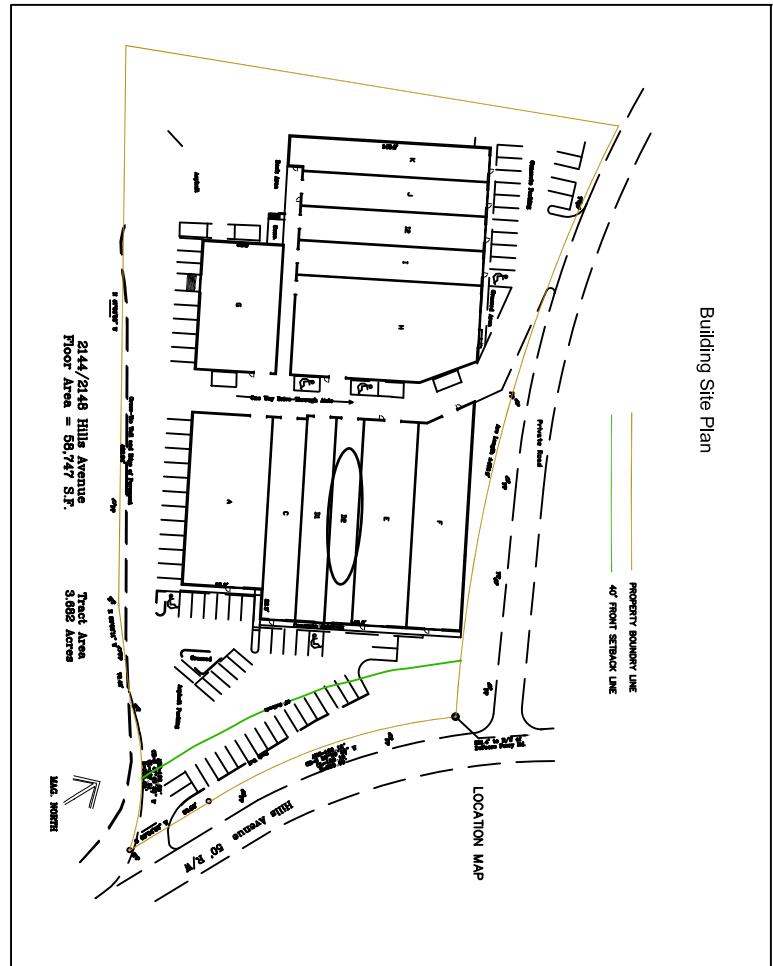
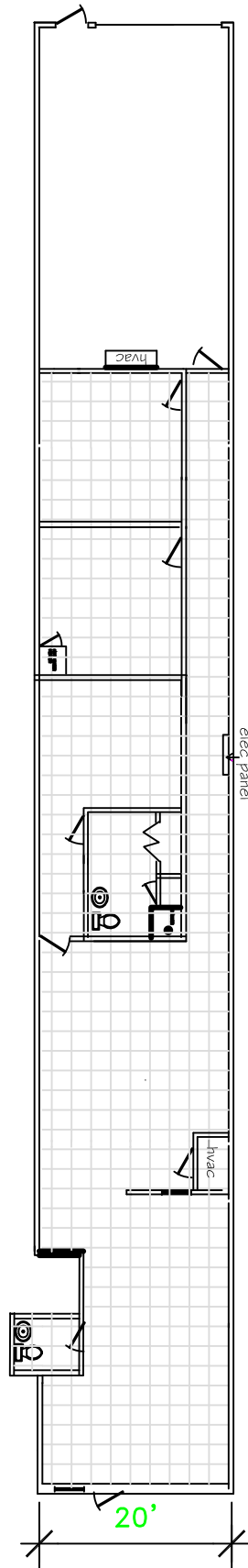
For More Information - Contact:
Anne Puett Johnson
404 355 1505
annepj@mewsdevelopment.com

Deshion Crawford
404 355 1505
deshion@mewsdevelopment.com

Gillespi Business Center

2135 Defoor Hills Road & 2144/48 Hills Ave.
Atlanta, GA 30318

2144 Hills Avenue
 Suite D2
 3,005 SF



For more information contact:



For more information contact: Deshion Crawford or Anne Puett Johnson
 deshion@mewsdevelopment.com, annepj@mewsdevelopment.com
 www.mewsdevelopment.com

Gillespi Business Center
 2144 Defoor Hills Road,
 Suite D2
 Atlanta, GA 30318