

Gillespi Business Center

2135 Defoor Hills Road & 2144/48 Hills Ave.
Atlanta, GA 30318

3,005 sf Available Office/Warehouse Space with 1,220 of Office Space



2144-D Hills Avenue, Atlanta, GA 30318

Features

Located in the Chattahoochee Industrial/Westside Design District. Close to I-75, I-85, Downtown and Buckhead.

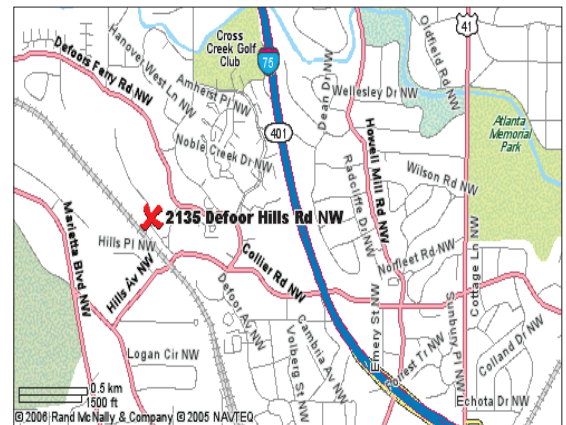
- 250 amp electrical service, 3-phase
- 15'6" Ceiling Height
- Fully Sprinklered
- Covered common dock high and rear loading

Common Expenses: \$2.05 apsf
Base Year Rental Rate: \$9.50 apsf nnn
Annual 3% escalations

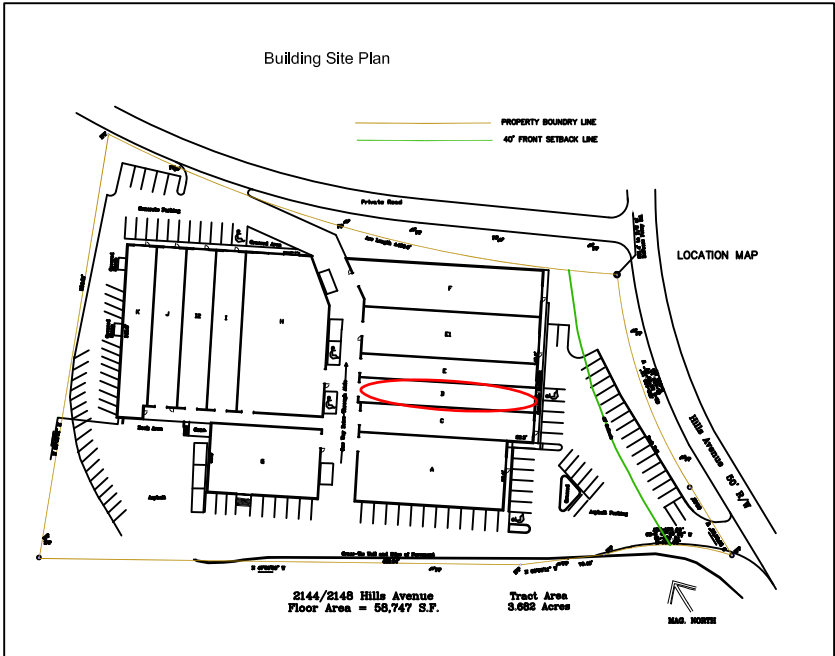
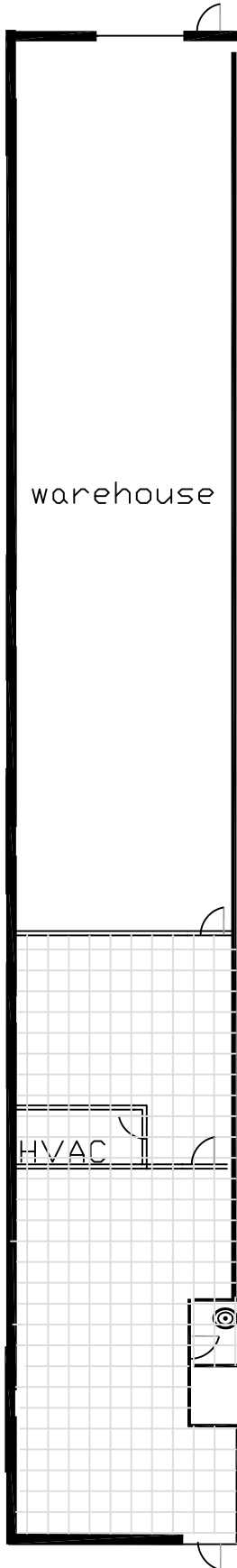
MEWS DEVELOPMENT

404 355 1505 | fax 404 355 3705 | www.mewsdevelopment.com
2135 Defoor Hills Road, Suite K2, Atlanta, GA 30318

For More Information - Contact:
Anne Puett Johnson
404 355 1505
annepj@mewsdevelopment.com



Deshion Crawford
404 355 1505
deshion@mewsdevelopment.com



2144 Hills Avenue
 Suite D
 3,005 SF



For more information contact:
 Deshion Crawford or Anne Puett Johnson 404-355-1505 or via
 email at deshion@mewsdevelopment.com or
annepj@mewsdevelopment.com
www.mewsdevelopment.com

Gillespi Business Center
 2144 Defoor Hills Road,
 Suite D
 Atlanta, GA 30318